

THE MNO AS A MÉTIS GOVERNMENT

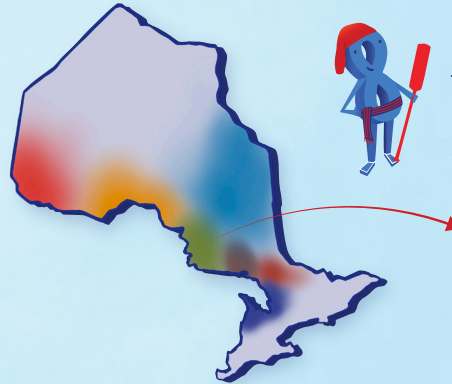
1 Which historic Métis community is your family from?



Hi, I'm Jean! I'm from the Historic Sault Ste. Marie Métis Community. This is where my family reconnects with our Métis roots and participates in the Métis harvest.

HISTORIC METIS COMMUNITIES IN ONTARIO

- Northwestern Ontario
- Northern Lake Superior
- Sault Ste. Marie
- Abitibi Inland
- Killarney
- Mattawa
- Georgian Bay



DID YOU KNOW?

The Historic Sault Ste. Marie Métis Community is one of 7 historic Métis Communities in Ontario.

Sault Ste. Marie
Historic Métis
Community

2 What MNO region do you live in today? What is Your Closest MNO Community Council?



Today, I live in Ottawa, which is in the Métis Nation of Ontario's Region 6.

Even though Ottawa is outside of traditional Métis territory, I can attend cultural events, access local services, and connect with other local Métis citizens through the Ottawa Region Métis Council.



DID YOU KNOW?

The Ottawa Region Métis Council is one of 29 Chartered Community Councils in the province, spread across 9 MNO administrative and electoral Regions.

3 What does the MNO do as your Métis Government?



The Métis Nation of Ontario is my Métis Government. It advocates for and provides important services to Métis citizens, like me, who are from the seven historic Métis Communities in Ontario, as well Métis from other parts of the Métis Homeland who live in Ontario today.



DID YOU KNOW?

The MNO has more than 30,000 registered Métis citizens. About 75% are from historic Ontario communities and 25% are from other parts of the Métis Homeland.

The historic Metis community that my family comes from (in Ontario or in the Metis Nation Homeland) is _____.

Today, I live in _____, which is in the Métis Nation of Ontario's administrative and electoral Region ____.

I can access local Métis events and services, and participate in my Métis Government through my Chartered Community Council, the _____ Métis Council.

THE MNO AS A MÉTIS GOVERNMENT

